



2014-2015

Limit switch

X42



 TAYEE

X42 series limit switch

product catalogue of Shanghai Tayee electric Co., Ltd

Purpose

X42 series limit switch is suitable for various mechanical equipments and automatic product lines where the load is light or medium. They can be used to detect motion status of objects, such as detecting the existence or nonexistence of objects, their motion location, the end of run and so on.

Brief introduction

A typical limit switch consists of operational unit, driving components and contact box. All switches possess double-breakpoint contacts. The normally off contact is affirmatively out. According to its connection mechanism the contacts can be divided into two types: high speed contacts (S) and low speed contacts (H). Technical criteria of X42 series limit switch accords with the international electric standards. High performance of our switches on mechanical life, degree of protection, electric performance, switch time accuracy and repeatability precision guarantee the safety of mechanical equipments.

Tough and durable

Shells of X42 series limit switch are made of high performance fire retardant nylon. Can endure strong impact. All switch rockers have undergone rust-proof treatment.

High degree of protection

Various industrial operating environments require high protection performance of limit switches. Degree of protection of X42 series limit switch accords with IP65. they work well under all kinds of harsh environments.

Affirmatively out, safe and reliable

Affirmatively-out operation means that when location of the operational unit accords with the out location of switch, all main contacts can be guaranteed at the out location. normally off contacts of X42 series limit switch are affirmatively out. They accord with the international standards of safety switches. With the switches affirmatively out, maloperation of ordinary switches can be prevented.

Easy installation

A X42 limit switch can be mounted on mechanical equipments with two mere screws, the installation is very easy.





Flexibility

A series limited switch possesses 12 kinds of operational units to cater for different demands of different customers. Any operational unit can rotate 90 degrees along each of the four directions. Maximum deflection angle of oscillating arm amounts to 270 degrees, oscillating arm and rotating axis joggle with teeth. Relative angle of oscillating arm and rotating axis can be adjusted by 10 degrees.



Long life

X42 series limit switch possesses long life. The mechanical life of a X42 limit switch amounts to 5000,000 times of operation. Electrical life amount to 500,000 times of operation.

High accuracy

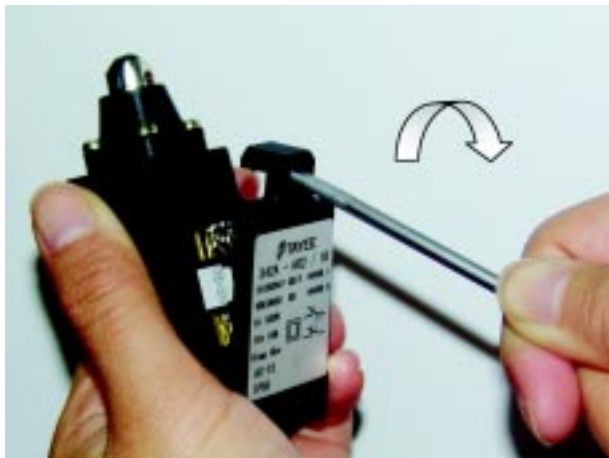
X42 series limit switch possesses high repeatability precision and high switch time accuracy.

Double-breakpoint contact

All switch contacts possess double breakpoint, all contact points are made of silver alloy, circuit isolation between contact points guarantees high safety of the switches.

Easy connection

Cover of the switch box is locked with a clipping machine, no screw is needed, Cover of the switch box can be easily opened or closed with one mere action on demand. Operation is simple and easy.

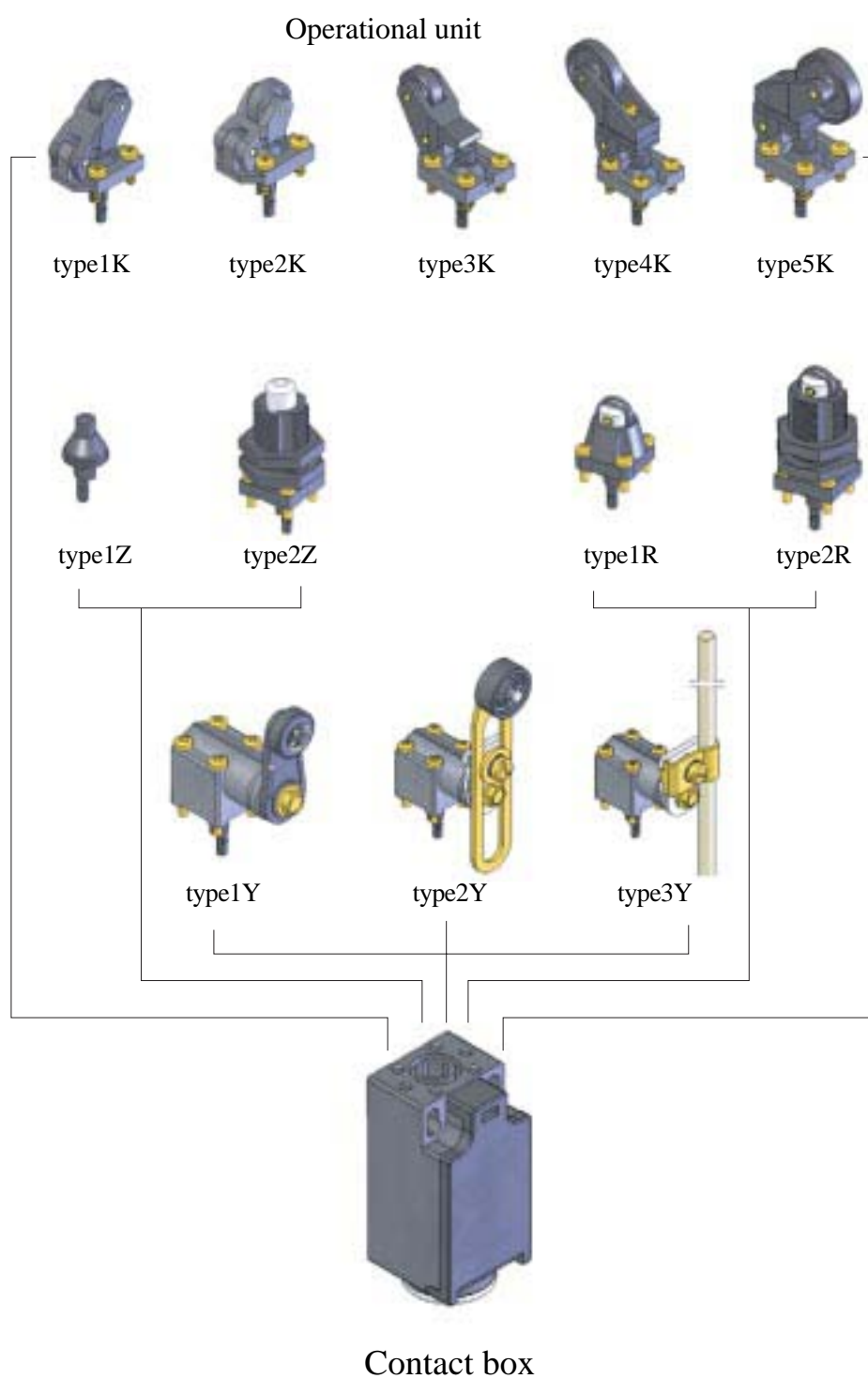


NOTE: before connection begins a plain screw driver can be used to open the switch box as shown in the sketch map.

X42 series limit switch

product catalogue of Shanghai Tayee electric Co., Ltd

Sketch map of products assembly



The standards accord with	IEC60947 GB/T 14048.1
Shell	reinforced fireretardant nylon66
Degree of protection	IP65
Contact material	silver alloy
Contact components	electrical isolation,double breakpoint contact
X42 series limit switch	The normally off contact is affirmatively out
Connection terminal	Screw connection£"maixmum2.5mm²(cable terminal included)
Rated impact voltage(Uimp)	6kV
Promissory radiation current(Ith)	10A
Rated isolation voltage(Ui)	690V
Application class	AC-15
Rated working current/voltage(Ie / Ue)	4A / 230V AC,2.5A/400V AC,1A/690V AC
Working temperature	-30°C - +80°C
Mechanical life	5,000,000 times of operation

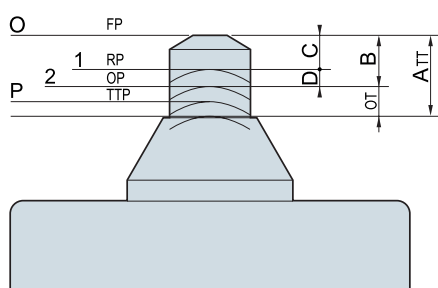
	Low speed	High speed
Breaking distance of contact points	2X3.5mm(maximum over travel)	2X2mm
Switching time	Depend on the speed of handspike	When the speed of handspike is 10mm/min£"≤5ms
Remaining bouncing time	Depend on the speed of handspike	≤ 3ms
Operating speed	minimun 60mm/min	Minimum 10mm/min
Switching	maximun 3000times/hour	Maximun 3000times/hour

X42 series limit switch

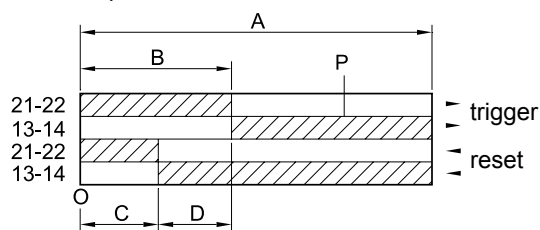
product catalogue of Shanghai Tayee electric Co., Ltd

High speed switch: the switching time is irrelevant with the operating speed. If and only if the operational unit is moved to a certain location the switch can be connected or broken, the time is for the spring to bounce, the time is very short and equals to a constant.

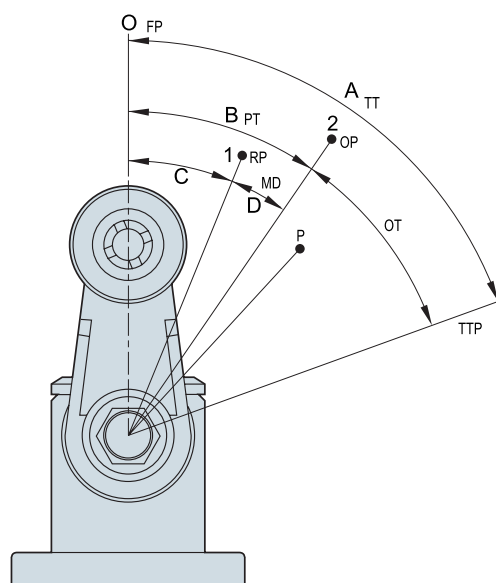
Linear movement(straight movement)



For example: 1N/C+1N/O



Rotation movement



Standard techical terms

A Maximum over travel

B Trigger over travel

C Reset over travel

D Over travel difference

P Contact points that ensures breaking

A-B Special name

1 Reset point

2 Trigger point

0 No special name

°TM No special name

TT Total over travel

PT The shortest over travel

MD Offset difference

OT Excessive over travel

RP Release location

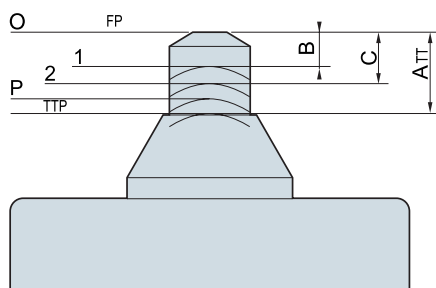
OP Acting location

FP The starting location

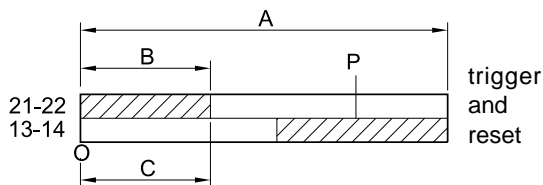
TTP The location of total over travel

Low speed switch: the switching time depend on the operating speed. The faster the operating, the shorter the switching time

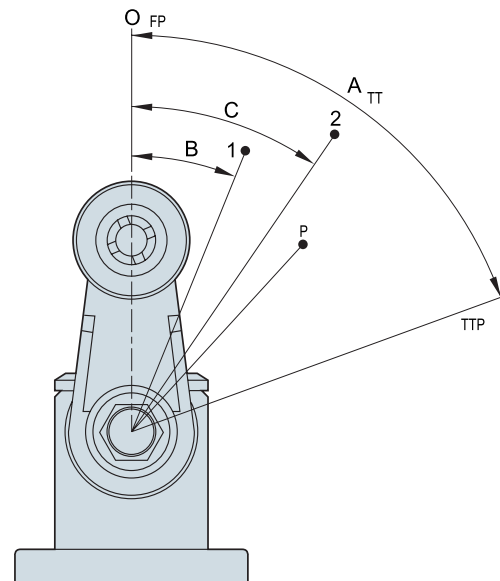
Linear movement(straight movement)



For example:1N/C+1N/O break first connect



Rotation movement



Standard technical terms

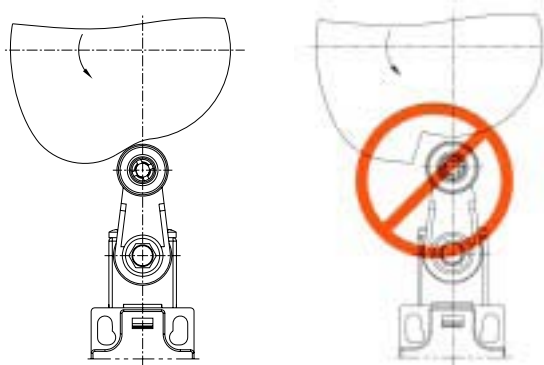
A	Maximum over travel	TT	Total over travel
B	Trigger and reset over travel of normally off contact ---		
C	Trigger and reset over travel of normally on contact ---		
P	Contact points that ensure reliable breaking ---		
1	Trigger and reset point of normally off contact ---		
2	Trigger and reset point of normally on contact ---		
0	No special name	FP	The starting location
---	No special name	TTP	The location of total over travel

X42 series limit switch

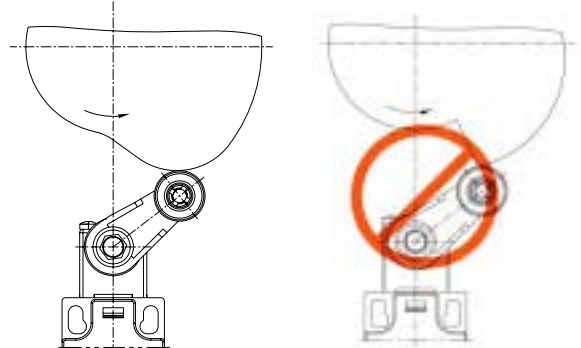
product catalogue of Shanghai Tayee electric Co., Ltd

Proper use of limit switch

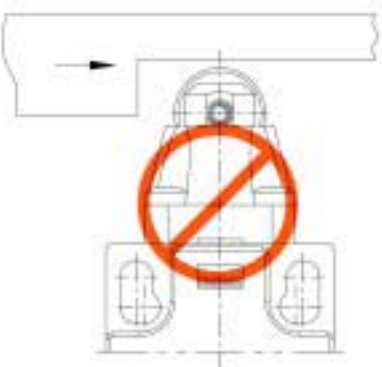
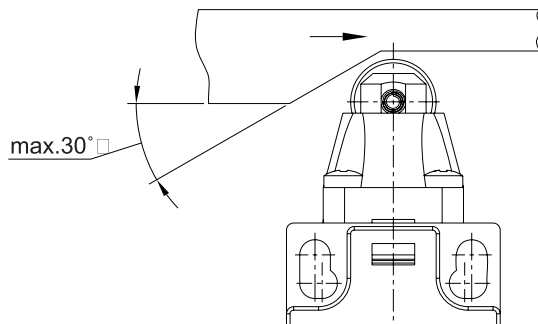
Ascending edge of cam



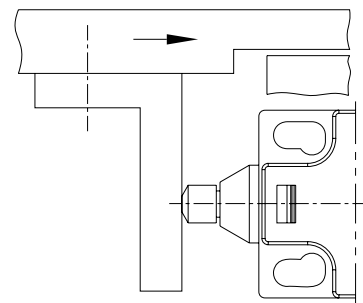
Descending edge of cam



Top of the truck translation unit



Ultimate limit



NOTE:high speed limit switches should be used under the following occasions

- The connection and breaking of contact points are realized at the same time;
- When the switch contacts separate for a certain distance, the equipment running stops, under this condition the tremor caused reconnection of contact points can be prevented lest the equipment will run (lag effect of switch);
- When the operating speed is extremely low^a
- It is demanded that the unintended electric arc disappear promptly after the direct current is broken off.

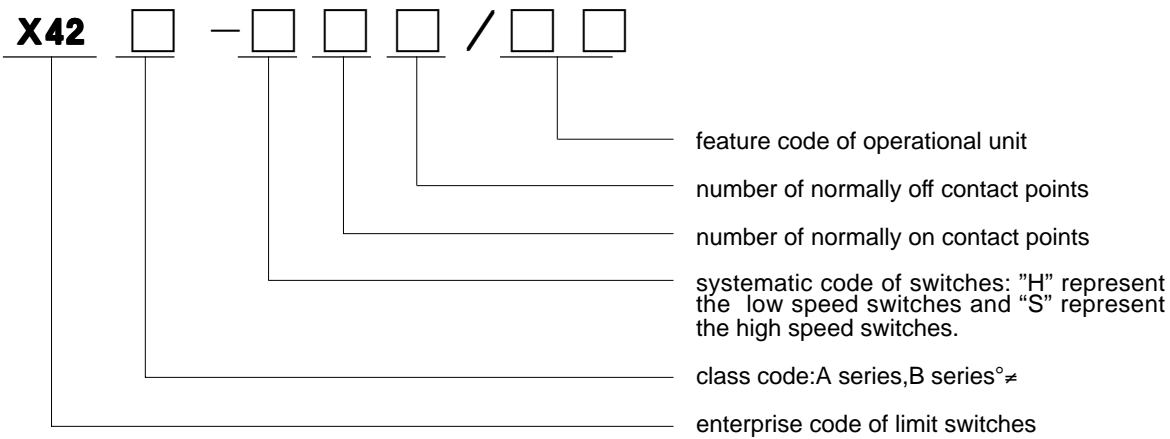
Degree of protection

IP

1st numeral:degree of protection against human body and solid objects	NO	2nd numeral:degree of protection against dripping water
No protection	0	No protection
ø50mm Protection against solid objects	1	Protection against dripping water(vertically)
ø12mm Protection against solid objects	2	Protection against dripping water of up to15° angle
ø2.5mm Protection against solid objects	3	Protection against wind and rain
ø1mm Protection against solid objects	4	Protection against cascade
Protection against dust intrusion£®dust proof£©	5	Protection against water spray
Dustproof£®totally dustproof£©	6	Protection against wave influence
	7	Protection against water jet
	8	Protection against flood

Purchase guidance

Type&specs



X42 series limit switch

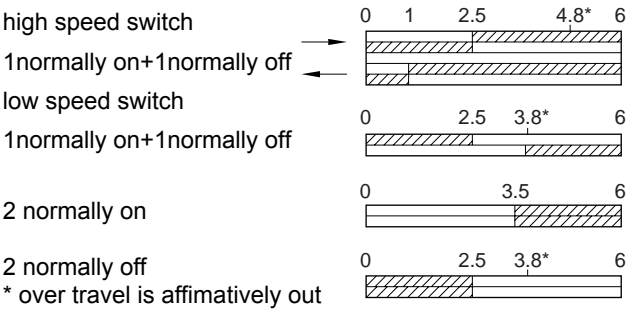
product catalogue of Shanghai Tayee electric Co., Ltd

Purchase guidance

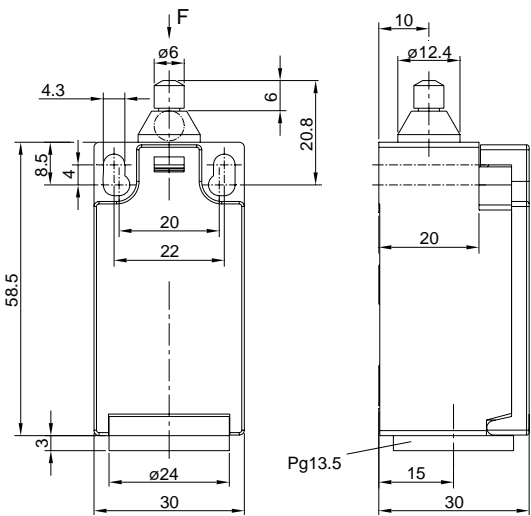
Straight bar



Sketch map of switch over travel



Physical appearance and outline sizes of products













operational unit type1Z (straight bar)
operating force/moment 9Ncm (19Ncm) affirmatively out
operating speed minimum10/60mm/min,maximum1m/s

Type	X42A-S11/1Z	X42A-S02/1Z	X42A-H11/1Z	X42A-H02/1Z	X42A-H20/1Z
Type&Specs	High speed switch Affirmatively out	High speed switch Affirmatively out	Low speed switch Affirmatively out	Low speed switch Affirmatively out	Low speed switch Affirmatively out

high speed switch
1 normally on+1 normally off
low speed switch
1 normally on+1 normally off
2 normally on
2 normally off
* over travel is affirmatively out

operational unit	type2Z (straight bar/central installation)
operating force/moment	9Ncm (9Ncm) affirmatively out
operating speed	minimum10/60mm/min:maximum 1m/s

Type	X42A-S11/2Z	X42A-S02/2Z	X42A-H11/2Z	X42A-H02/2Z	X42A-H20/2Z
Type&Specs	High speed switch Affirmatively out	High speed switch Affirmatively out	Low speed switch Affirmatively out	Low speed switch Affirmatively out	Low speed switch Affirmatively out
					
					

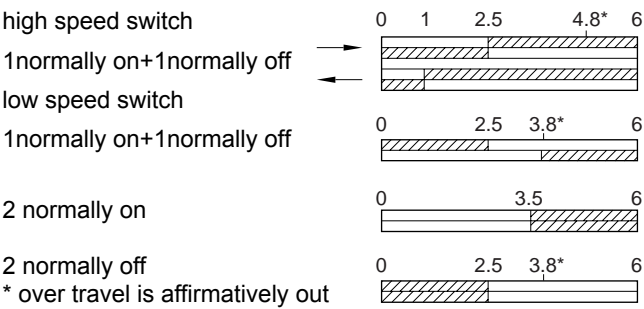
X42 series limit switch

product catalogue of Shanghai Tayee electric Co., Ltd

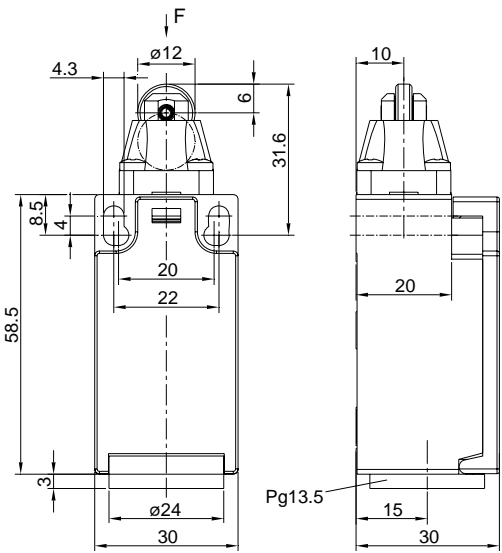
Truck straight bar



Sketch map of switch over travel



Physical appearance and outline sizes of products



operational unit type1R (turck straight bar)
operating force/moment 9Ncm (19Ncm) affirmatively out
operating speed minimum20/120mm/min:maximum1m/s

Type	X42A-S11/1R	X42A-S02/1R	X42A-H11/1R	X42A-H02/1R	X42A-H20/1R
Type&Specs	High speed switch Affirmatively out	High speed switch Affirmatively out	Low speed switch Affirmatively out	Low speed switch Affirmatively out	Low speed switch Affirmatively out
	13 — 14 21 — 22	21 — 22 11 — 12	21 — 22 13 — 14	21 — 22 11 — 12	23 — 24 13 — 14

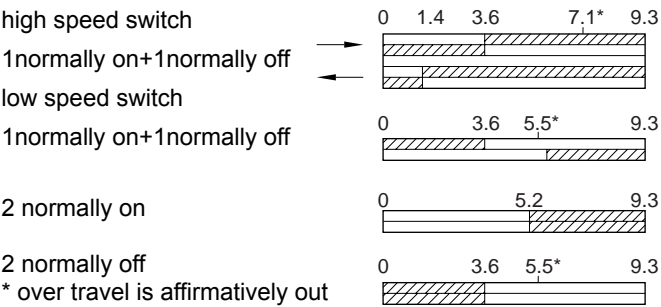
X42 series limit switch

product catalogue of Shanghai Tayee electric Co., Ltd

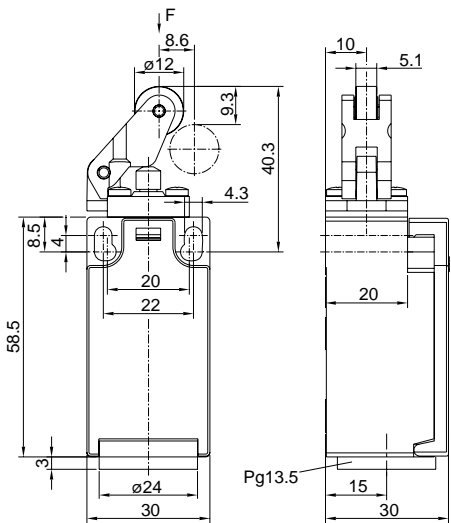
Bevel handspike



Sketch map of switch over travel



Physical appearance and outline sizes of products



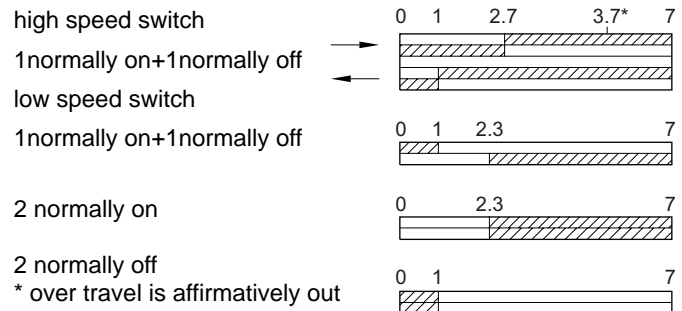
operational unit type1K (bevel handspike)
operating force/moment 8Ncm (18Ncm) affirmatively out
operating speed minimum24/240mm/min:maximum1m/s

Type	X42A-S11/1K	X42A-S02/1K	X42A-H11/1K	X42A-H02/1K	X42A-H20/1K
Type&Specs	High speed switch Affirmatively out	High speed switch Affirmatively out	Low speed switch Affirmatively out	Low speed switch Affirmatively out	Low speed switch Affirmatively out
	13 — 14 21 — 22	21 — 22 11 — 12	21 — 22 13 — 14	21 — 22 11 — 12	23 — 24 13 — 14

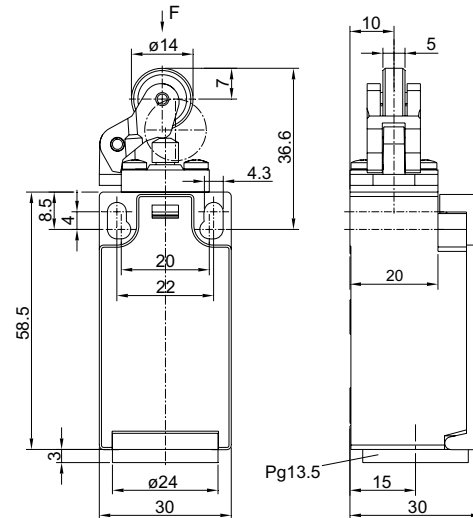
Bevel handspike



Sketch map of switch over travel



Physical appearance and outline sizes of products



operational unit type 2K (straight bar central installation)
 operating force/moment 15Ncm (18.5Ncm) affirmatively out
 operating speed minimum27/160mm/min:maximum1m/s

Type	X42A-S11/2K	X42A-S02/2K	X42A-H11/2K	X42A-H02/2K	X42A-H20/2K
Type&Specs	High speed switch	High speed switch	Low speed switch	Low speed switch	Low speed switch
	Affirmatively out	Affirmatively out	Affirmatively out	Affirmatively out	Affirmatively out

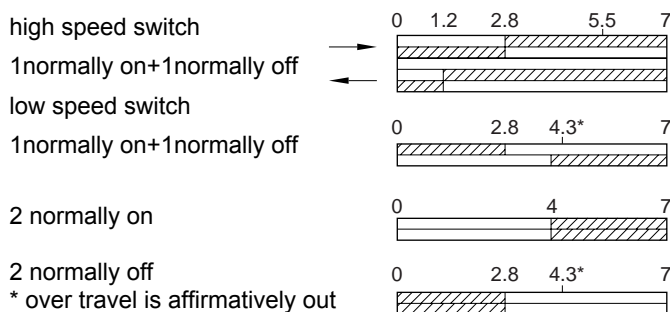
X42 series limit switch

product catalogue of Shanghai Tayee electric Co., Ltd

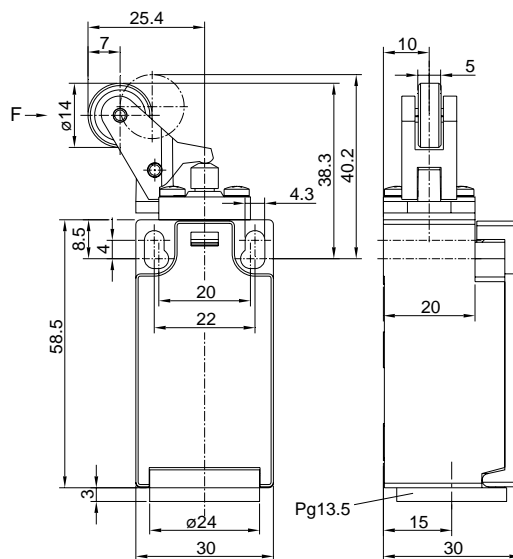
Bevel handspike



Sketch map of switch over travel



Physical appearance and outline sizes of products



operational unit type3K (bevel handspike)
operating force/moment 9Ncm (19Ncm) affirmatively out
operating speed minimum27/160mm/min:maximum1m/s

Type	X42A-S11/3K	X42A-S02/3K	X42A-H11/3K	X42A-H02/3K	X42A-H20/3K
Type&Specs	High speed switch Affirmatively out	High speed switch Affirmatively out	Low speed switch Affirmatively out	Low speed switch Affirmatively out	Low speed switch Affirmatively out

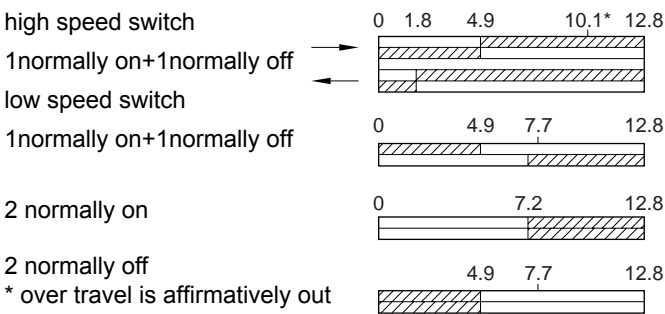
X42 series limit switch

product catalogue of Shanghai Tayee electric Co., Ltd

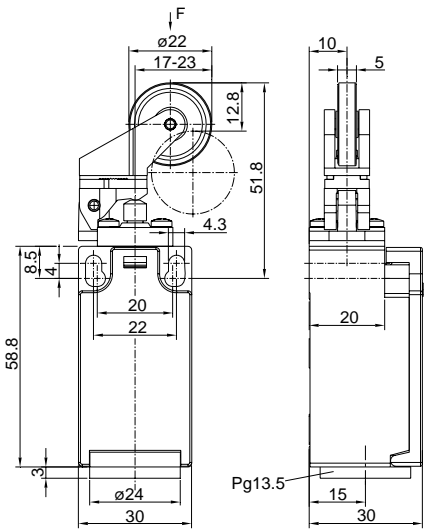
Truck rocker



Sketch map of switch over travel



Physical appearance and outline sizes of products



operational unit type5K (bevel handspike)
operating force/moment 6Ncm (16Ncm) affirmatively out
operating speed minimum56/336mm/min:maximum1m/s

Type	X42A-S11/5K	X42A-S02/5K	X42A-H11/5K	X42A-H02/5K	X42A-H20/5K
Type&Specs	High speed switch Affirmatively out	High speed switch Affirmatively out	Low speed switch Affirmatively out	Low speed switch Affirmatively out	Low speed switch Affirmatively out
	13 — 14 21 — 22	21 — 22 11 — 12	21 — 22 13 — 14	21 — 22 11 — 12	23 — 24 13 — 14

Truck rocker



Sketch map of switch over travel

high speed switch

1 normally on+1normally off

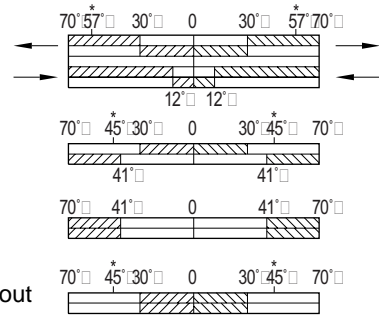
low speed switch

1 normally on+1normally off

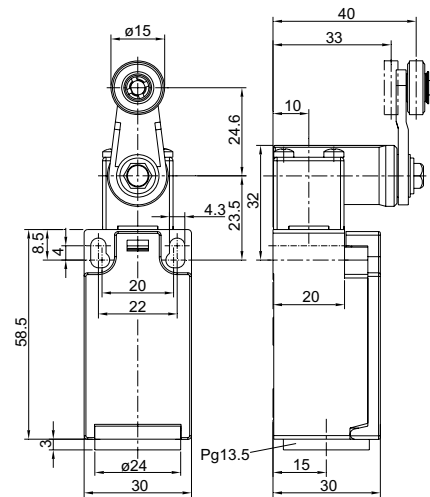
2 normally on

2 normally off

* over travel is affirmatively out



Physical appearance and outline sizes of products



operational unit type1Y (straight bar/central installation)
 operating force/moment 15Ncm (18.5Ncm) affirmatively out
 operating speed minimum92/492mm/min:maximum1m/s

Type	X42A-S11/1Y	X42A-S02/1Y	X42A-H11/1Y	X42A-H02/1Y	X42A-H20/1Y
Type&Specs	High speed switch	High speed switch	Low speed switch	Low speed switch	Low speed switch
	Affirmatively out	Affirmatively out	Affirmatively out	Affirmatively out	Affirmatively out

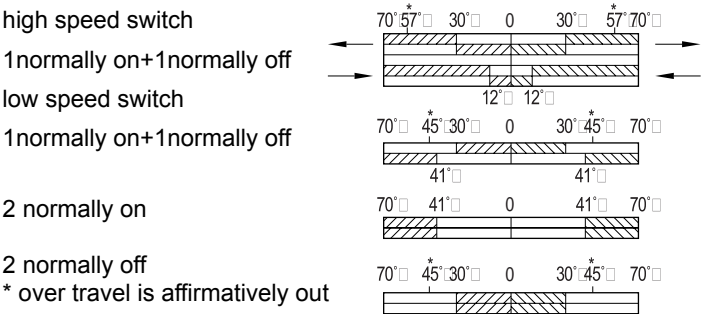
X42 series limit switch

product catalogue of Shanghai Tayee electric Co., Ltd

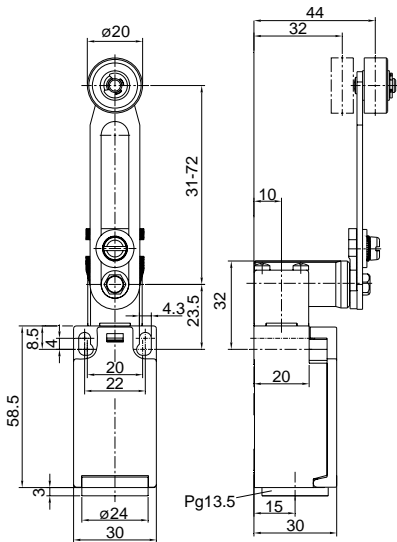
Adjustable truck rocker⁽¹⁾



Sketch map of switch over travel



Physical appearance and outline sizes of products



operational unit

type2Y (bevel handspike)

operating force/moment

15Ncm (18.5Ncm) affirmatively out

operating speed

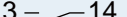
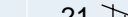
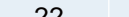

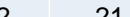
minimum240/1440mm/min:maximum1m/s

Type	X42A-S11/2Y	X42A-S02/2Y	X42A-H11/2Y	X42A-H02/2Y	X42A-H20/2Y
Type&Specs	High speed switch	High speed switch	Low speed switch	Low speed switch	Low speed switch
	Affirmatively out	Affirmatively out	Affirmatively out	Affirmatively out	Affirmatively out
	<div> <div>13</div> <div>14</div> <div>21</div> <div>22</div> </div>	<div> <div>21</div> <div>22</div> <div>11</div> <div>12</div> </div>	<div> <div>21</div> <div>22</div> <div>13</div> <div>14</div> </div>	<div> <div>21</div> <div>22</div> <div>11</div> <div>12</div> </div>	<div> <div>23</div> <div>24</div> <div>13</div> <div>14</div> </div>

(1)only suitable for orientation

[illegible]

operational unit	type3Y (straight bar/central installation)
operating force/moment	15Ncm (18.5Ncm) affirmatively out
operating speed	minimum92/492mm/min:maximum1m/s

Type	X42A-S11/3Y	X42A-S02/3Y	X42A-H11/3Y	X42A-H02/3Y	X42A-H20/3Y
Type&Specs	High speed switch	High speed switch	Low speed switch	Low speed switch	Low speed switch
	Affirmatively out	Affirmatively out	Affirmatively out	Affirmatively out	Affirmatively out
					



TYIPB



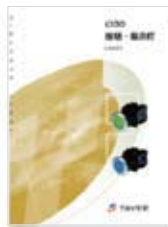
TYIPS



TYIP



TYIPA



TY3IP



TYZHD



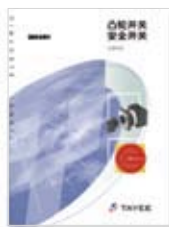
TYJSD



TYJSDS



TYJSDT



TYLW



TYX



TYBOX



TYZC



TYJ



TYCJ



LED



TYC



TYX42B



More detailed information is available for taking.
Technology changes with each passing day, please feel free to contact to card when this version information.

Website qr code



Low qr code



More products information, please visit the website to download or for cd-rom electronic information.
Thank you for your contribution to the energy conservation and environmental protection!

Shanghai TAYEE Electric Co.,Ltd.

Factory: 101 Beimin Road, Songjiang District, Shanghai
Tel: 021-57776240 Fax :021-67654522 Postal Code: 201611
Sales: 889 Yishan Road, Qilai Building Room 1702 Shanghai
Tel: 021-54012233 Fax :021-54012399 Postal Code:200233
<http://www.tayee.com.cn> Email:sale@tayee.com.cn

Hotline: 400 820 4217